

Installation Manual:
Mercedes C Class W204 2007>

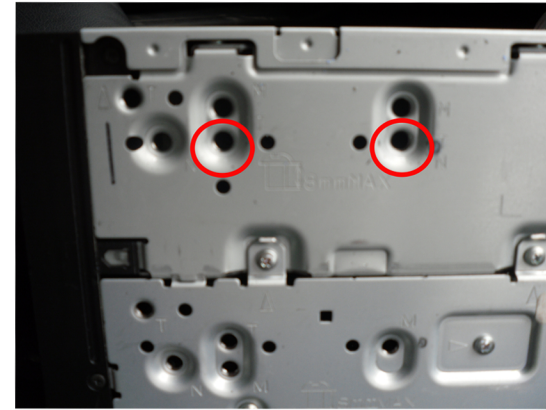
CT23MB15

1. Mount the brackets (E) to both sides of the Pioneer head unit.

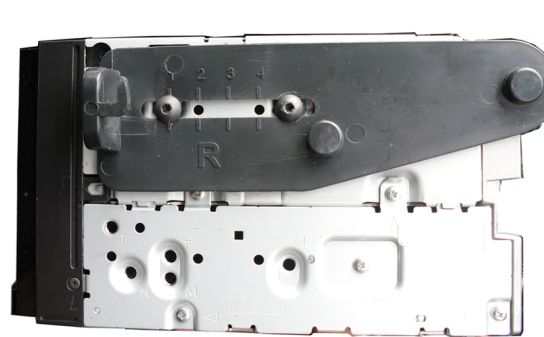


Kit Includes:

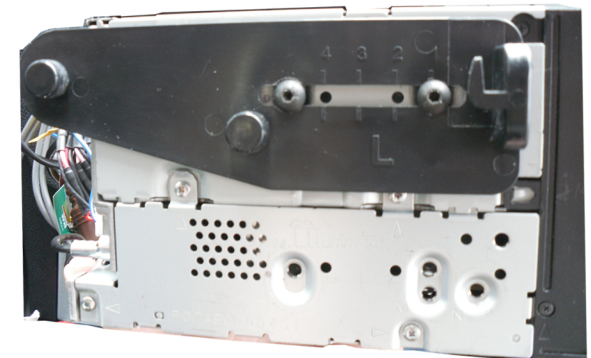
- 1: Fascia trim x1
- 2: Pair of brackets x1
- 3: Blank relocation buttons (Left, Middle, Right) x3
- 4: Relocation panel x1
- 5: Relocation lead x1
- 6: Screws x4



The holes in which the bracket should be screwed are circled



Right



Left



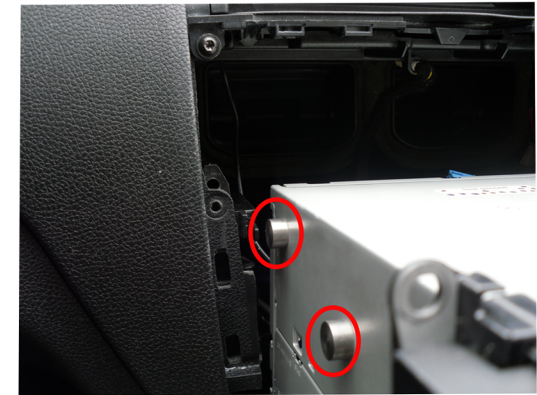
...connecting to the aftermarket

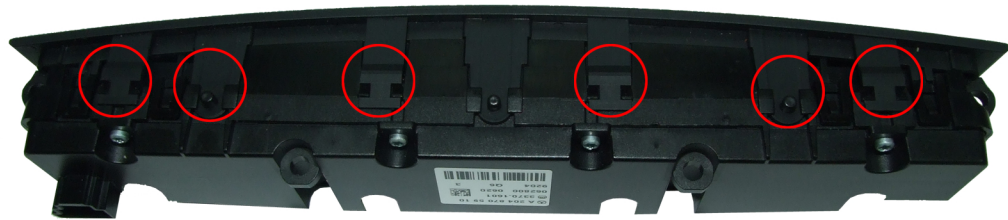


Remove airvents and disconnect the two Blue connectors from underneath vents.

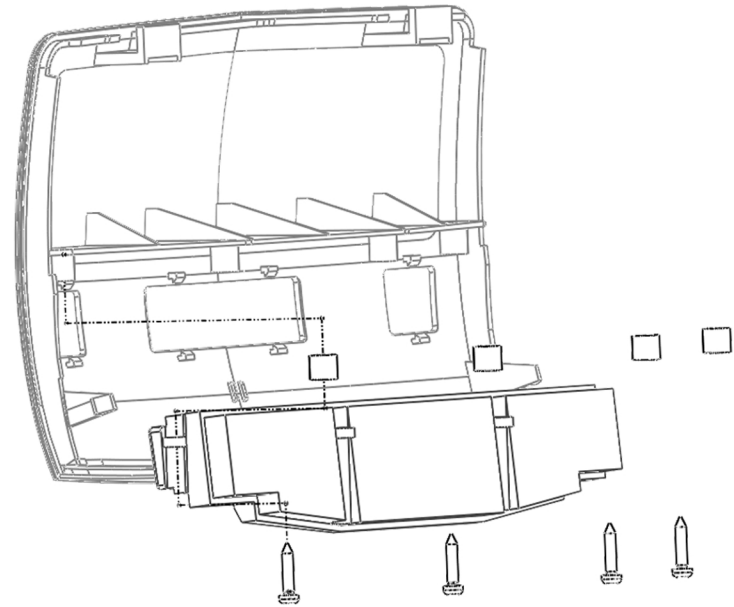


Guide the head unit from the dash. There are runners as shown bellow.





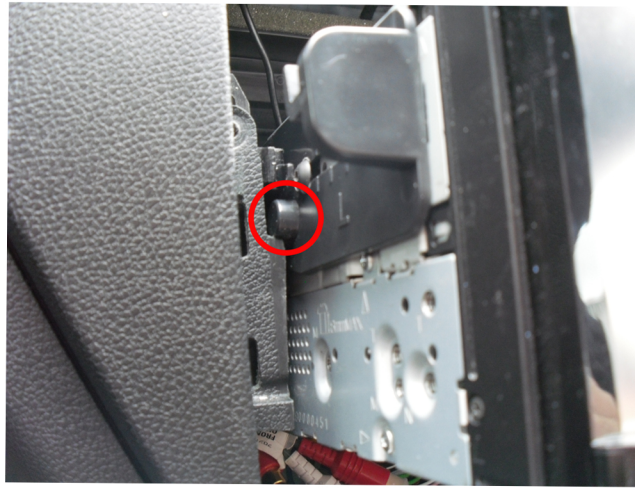
Detach the clips as shown above on bellow



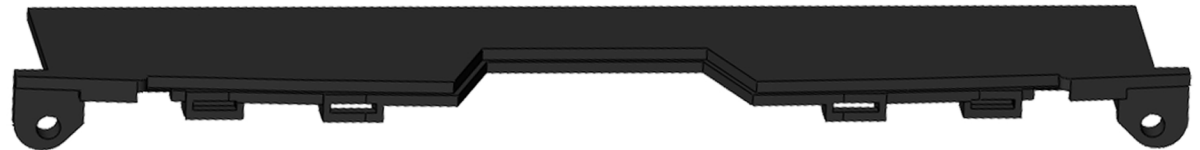
Disassemble buttons to relocation panel



Using lead 382 to extend OEM wiring from buttons to new location

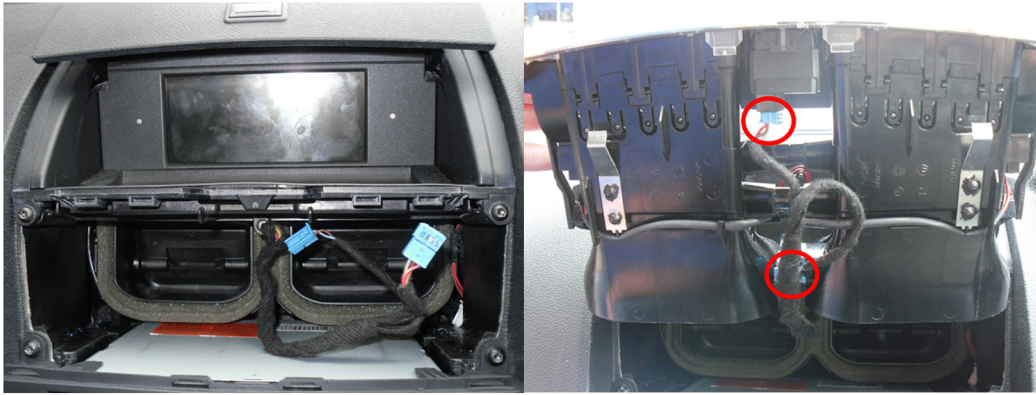


Ensure all wires are clear of the aperture. Slide the head unit back into the dash. Ensure that the guide knobs are lined up with the guide rails as shown.



Install the screw base by locating the screws from the display removal.

1



Reconnect the two Blue connectors to the airvent panel

2



Slide airvent panel back into the place.

3



Install New Relocation Panel . The panel is very tight to clip in place, you will need to clip the top hooks first then lower clips.